



TAG BLUEFORCE

TAG Global Systems
TOMORROW'S TECHNOLOGY...TODAY!

What is TAG BLUEFORCE?

TAG BLUEFORCE is a system that combines hardware with three software components: 1) **BLUEBEACON**, 2) **B-TAC** (blue tactical), 3) **COMMAND** (interactive software console).

Why TAG BLUEFORCE?

TAG BLUEFORCE is an investment in your personal safety and protection. Developed for the military, this system is no longer solely to protect our troops. It has been designed to protect YOU. By combining software and hardware we are able to track your health and location to keep you safe in crisis management situations. Situational command will determine if extraction is necessary.

SYSTEM FEATURES

- Two World Phones
- Two Wireless Earpieces
- Rugged Branded Briefcase
- Real time awareness of mobile resources
- Two Person carried/attached environmental sensors
- Single "dashboard view of Mark and Manger
- Device sensor awareness
- Emergency event reporting



DETAILS

BLUEBEACON

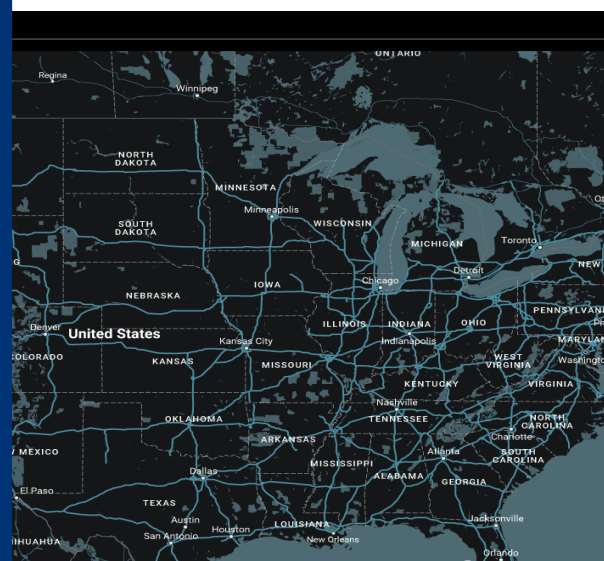
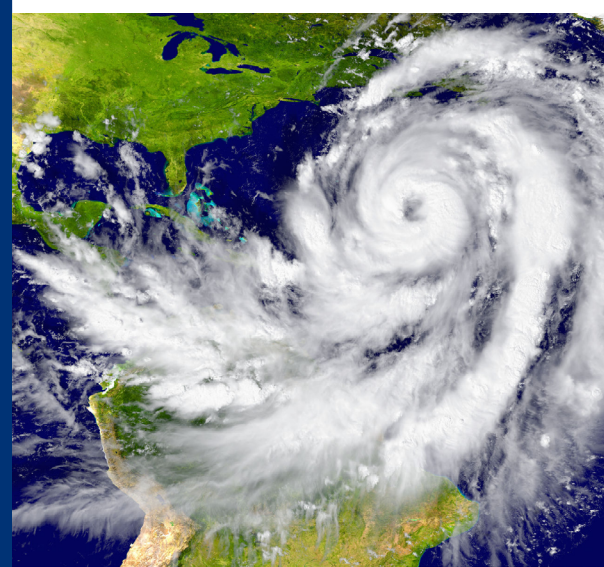
- **Real-Time Location Services:** Latitude and longitude, sent to up to two Blueforce endpoints at user defined intervals (default = 60 seconds).
- **Panic Signaling:** A simple swipe on the user interface puts Blue light into a panic state which then notifies subscribed endpoints that help is needed.
- **Secure:** Enduser controls who has access to their location information. All information sent using military-grade encryption.
- **Physical Disposition:** BlueBeacon transmits the disposition of the Android device by indicating if the user is moving or motionless.
- **Privacy Controls:** The enduser may set what is sent, even in non-panic modes.
- **NEW! "Rip Cord" Signaling:** Panic can now be fired by merely pulling headphones out of the headphone jack on your Android device.
- **NEW! Auto-Picture:** On panic, BlueBeacon can be configured to take photos every 5 seconds from both front and rear cameras, and send to your personal responder network.

B-TAC

- **Tactical Presence:** Presence is more than offline, online, or away. Presence is about texture and context; this includes location, health, and status fused to provide complete awareness of each endpoint.
- **Location:** Geospatial tracking for outdoor use and network location for indoor use.
- **Information Sharing:** Share pictures, floor plans, biometrics, forms, and more.
- **Extensible, Plug-In Platform:** Allows body-attached, person-carried, and unmanned sensors to be normalized and shared amongst the team.
- **Secure:** Blueforce Tactical enforces TLS data link (256-bit) connectivity for session-based authentication and encryption.
- **Standards-Based and Enterprise Ready:** Blueforce products are built on interoperable internet protocols and can be used with Oracle, Cisco, Sun, Google, and other standards-based enterprise collaboration services.
- **Pervasive Computing:** Runs on Android and iOS SmartPhones and tablets.

COMMAND

- **Real-Time View:** People, sensors, resources, and information services provided on real-time maps and dashboards. Critical information is no more than a click away.
- **Your View, Your Way:** Supports multiple cognitive models for the consumption of information – map views for the geospatially inclined or enduser constructed dashboards.
- **Secure:** Command Center makes use of a FIPS 140-2 cryptographic provider thereby delivering military-grade encryption and authentication for data in transit and at rest.
- **Alerts and Notifications:** Customize the way in which you are notified of mission critical events using visual, audible, and workflow-based notifications.
- **Historical Perspective:** Command Center stores all communications ensuring full chain of custody and historical "playback" of incidents for after-action, lessons learned, and/or training purposes.
- **Standards-based, Scalable, and Interoperable:** Built on United States Government mandated interoperable presence and messaging standards; protocol scales to millions of endpoints. Real-time and dynamic KML output for use with GIS or C4ISR systems.
- **Information Sharing:** Share imagery, secure text, floor plans, biometrics, forms using one-to-one or full broadcast mode.
- **Extensible, Plug-In Platform:** Allows person-attached, unmanned ground sensors, and enterprise information system data to be normalized and shared amongst a subscribed team.
- **Pervasive Computing:** Can be used on any computing platform that supports Chrome, Firefox, and/or Safari HTML5-capable browsers.



Contact **TAG Global Systems** for a quote and more information:

575 WASHINGTON STREET STE 1, PEMBROKE, MA 02359 | **1.800.630.4708**

CEO@TAGGLOBAISYSTEMS.COM | www.TAGGlobalSystems.com

